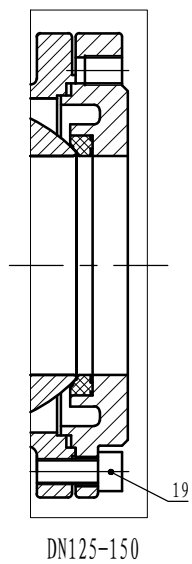
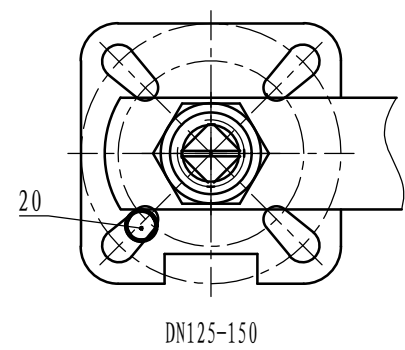
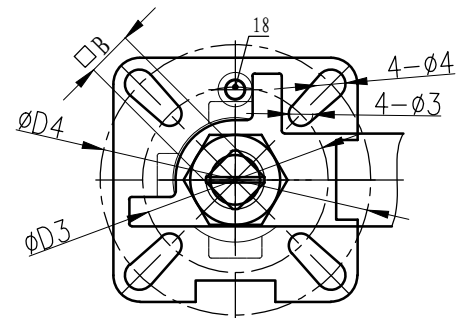


NPS	d	D	C	D1	T	f	n-M	L	h	H1	H	W	B	D3	D4	φ3	φ4
DN15	15	95	45	65	9	2	4-M12	42	9	48	73	141	9	36	42	6	6
DN20	20	105	58	75	9	2	4-M12	44	9	53	78	141	9	36	42	6	6
DN25	25	115	68	85	9	2	4-M12	50	11	62	99	162	11	42	50	6	7
DN32	32	140	78	100	12	2	4-M16	60	11	72	109	162	11	42	50	6	7
DN40	38	150	88	110	13	3	4-M16	65	14	84	122	220	14	50	70	7	9
DN50	50	165	102	125	20	3	4-M16	80	14	86	124	220	14	50	70	7	9
DN65	65	185	122	145	18	3	4-M16	110	17	108	153	285	17	70	102	9	11
DN80	76	200	138	160	20	3	8-M16	120	17	118	164	285	17	70	102	9	11
DN100	94	220	158	180	20	3	8-M16	150	22	143	191	380	22	--	102	--	11
DN125	118	250	188	210	22	3	8-M16	180	30	180	252	456	27	--	125	--	14
DN150	142	285	212	240	22	3	8-M20	225	30	198	270	656	27	--	125	--	14



20	Screw	304
19	Screw	304
18	Screw	304
17	Handle sleeve	PVC
16	Handle	304
15	Gasket	304
14	Loose proof gasket	304
13	Nut	304
12	Disc spring	SS301
11	Gland	316L
10	Packing	Graphite
9	O-Ring	Viton
8	Thrust gasket	RPTFE
7	Sealing gasket	Graphite
6	O-Ring	Viton
5	Seat	RPTFE
4	Stem	A276-316
3	Ball	A182-F316
2	Cap	1.4408
1	Body	1.4408
NO.	Name	Material



Design Specification:
 Design Standard: DIN 3357-2 ;
 Rating: DN15-50, PN40; DN65-100, PN16
 Face to Face: factory standard;
 Flange: EN 1092-1;
 Temperature: -29~160°C;
 Medium: Water, oil, gas.

Test Form	
Pressure	PN40/PN16
Test standard	EN 12266
Test pressure	6.0/2.4 MPa
Shell test	6.0/2.4 MPa
Seat test	0.6 MPa
Seat test (Gas)	0.6 MPa

Mark	File number	Signature	Date
Drawn	Technology		
Design			
Reviewed	Verified		
Stand	Approved		

IPC Flanged Floating Ball Valve
 PN40 DN15-50, PN16 DN65-150
 (EN1092-1)

View Angle: M. T
 LTS 1:1 W. T

PPS
 International